

Why Do A Crop*A*Syst?

- ◆ To evaluate field, nursery, and orchard practices that may pose a risk to your water supply
- ◆ To identify low-cost ways to reduce those risks.
- ◆ To identify cost-share opportunities to implement stewardship practices
- ◆ To start the process for environmental stewardship



Technical Assistance

A Michigan Water Stewardship Program technician can work with you to complete a Crop*A*Syst and discuss alternatives which can help you reduce the risk of water contamination on your farm.

After completion, you decide what to do with the results of your assessment. Most people identify several things to reduce their risks and implement them at little or no cost without further support. Keeping proper records of field activities or taking soil and/or tissue samples can reduce risks.

At times further planning may be needed to implement high risk practices. Technicians can help farms find resources, whether monetary or technical, to reduce the risks that are found during your assessment.

For more information

Contact:
The Michigan Water Stewardship Program at (517) 335-6529, your local Conservation District or your county Michigan State University Extension office.

For information online, go to www.michigan.gov/mda and click on these links: Farming>Environment> Groundwater Stewardship Program
or
www.maeap.org



Major
Partners:

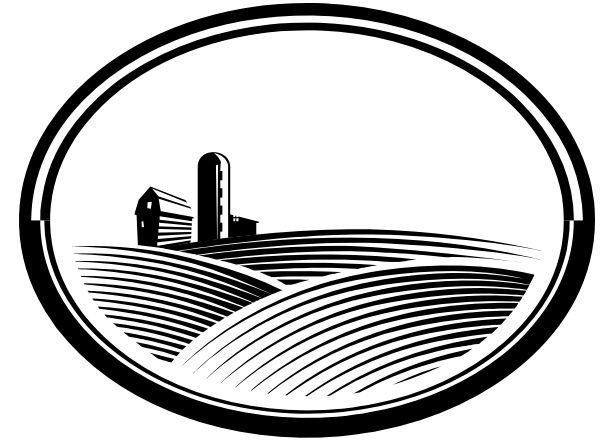


MICHIGAN STATE
UNIVERSITY
EXTENSION



Michigan Water Stewardship Program

Crop*A*Syst



For
Field and Vegetable Crops
Nursery Crops and
Christmas Trees
Orchard and Fruit

Field*A*Syst can help you identify ways to reduce risks of water contamination associated with field applications of pesticides and nitrogen fertilizers.

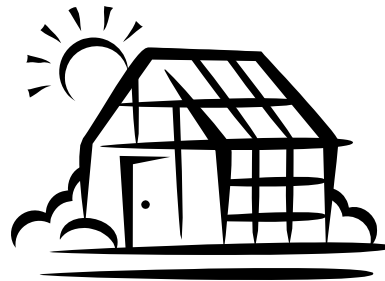
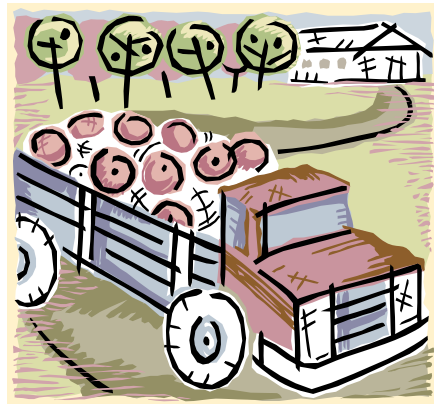
What is Crop*A*Syst

Crop*A*Syst (CAS) is an assessment tool that helps identify risks of water contamination in the field, orchard, vineyard, or nursery.

Crop*A*Syst is **voluntary** and **confidential**. All Crop*A*Syst materials stay with you on your farm. It is important to recognize that Crop*A*Syst only identifies risk. It does not tell you if you have contaminated water or that you will never have contaminated water.

There are specialized Crop*A*Syst tools for

- ◆ Field Crops
- ◆ Vegetable Crops
- ◆ Nursery Growers
- ◆ Christmas Trees
- ◆ Orchard
- ◆ Fruit



Crop*A*Syst includes assessments for:

- ◆ Nutrient Management
- ◆ Soil and Water Conservation Practices
- ◆ Pest Management Practices
- ◆ Water Use Reporting
- ◆ Crop-specific Management Practices
- ◆ Pasture Management
- ◆ Irrigation Management Practices
- ◆ Nursery Container Management Practices
- ◆ Other Environmental Risks specific to the commodity assessed
- ◆ Cropping System Improvement Action Plan specific to the commodity assessed

Environmental Assurance



The Michigan Agriculture Environmental Assurance Program (MAEAP) is an innovative, proactive program that helps farms of all sizes and all commodities voluntarily prevent or minimize agricultural pollution risks.

The MAEAP Cropping System focuses on field-related environmental issues, such as irrigation and water use, soil conservation, and nutrient and pest management. The Cropping System is applicable to all crops grown in Michigan, including field crops and vegetables, fruit orchards, greenhouses crops and ornamental trees.

Crop*A*Syst is coordinated with resources provided by the Michigan Water Stewardship Program (MWSP). Your local water stewardship technician can help you complete the risk assessment and provide information about other educational, technical and financial assistance available through the MGSP.

Once a plan to address the risks identified in the Crop*A*Syst (CAS) assessment has been developed, and immediate risks of groundwater and surface water contamination have been implemented, farmers can contact the Michigan Department of Agriculture (MDA) to request Farmstead System verification with an MDA MAEAP verifier.